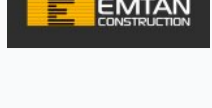


## Olive Hill residential complex

Location **Kyrenia, Alsancak**



### About the project



Developer	<b>Emtan Construction</b>	
Start of sale	<b>01.04.2022</b>	
Key handover	<b>2024</b>	
Houses/blocks	<b>5</b>	
Building floor	<b>3</b> Min	<b>3</b> Max
Units total	<b>90 - 2+1</b>	

Distance to the sea - 2300 m

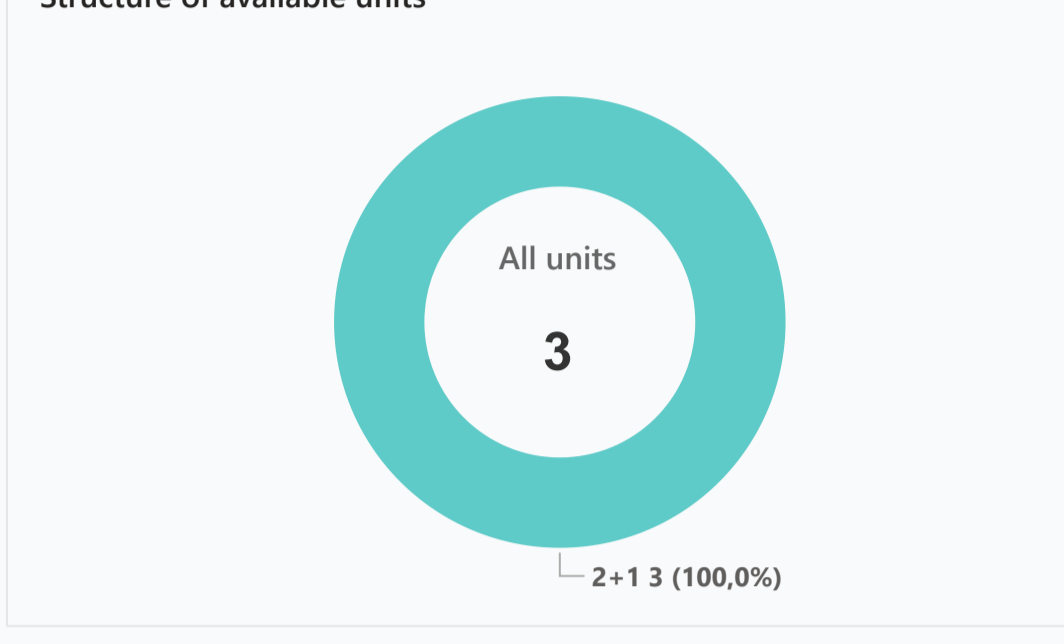
Distance to key locations:  
 Airport 55 km, Atakara Supermarket - 900 m, Merit Royal Premium Hotel - 2.1 km, Merit Royal Hotel - 2.1 km, Starling Supermarket - 2.2 km, Mare Monte Beach - 2.2 km, Camelot Beach - 2.2 km, Ambiance - 6.0 km, Girne American Universitesi - 6.7 km, Eziç Premier - 9.7 km, Kamiloglu Hastanesi - 9.8 km

Olive Hill project is located in the village of Alsancak, west of Kyrenia, the tourist center of Northern Cyprus, in a calm and quiet area. The project consists of 5 blocks and 90 units of luxurious 2+1 apartments with breathtaking mountain and sea views. Each apartment has its own mini-garden, balcony and roof terrace. Emtan Olive Hill offers you a unique opportunity to enjoy the natural beauty of the Mediterranean Sea and watch magnificent sunrises and sunsets.

### Complex infrastructure

- Central generator
- Central satellite
- Closed territory
- Kid's playground
- Kid's pool
- Open pool
- VRF system

### Available units **3** / 95 total



### Plans

#### 2. KAT PLANI (PENTHOUSE)

2. KAT KOŞE DAIRELERİ (PENTHOUSE)	YAT
DAİRE ALANI	162
ORTAK ALAN YERİ	5
SALON + MUTFAK	36
YATKİ HÖLÜ	4
EBBEYİN YATAK ODASI	16
YATKİ ODASI	15
WC + BANYO	5
BALKON	11
CATI TERASI	70

2. KAT DİĞER DAIRELER (PENTHOUSE)	YAT
DAİRE ALANI	169
ORTAK ALAN YERİ	5
SALON + MUTFAK	36
YATKİ HÖLÜ	4
EBBEYİN YATAK ODASI	16
YATKİ ODASI	13
WC + BANYO	7
EBBEYİN WC + BANYO	7
BALKON	9
CATI TERASI	70



#### ÇATI KATI (PENTHOUSE)



### 2+1

#### Payment plans

Deposit (non-refundable) 2000 GBP for apartments, 4000 GBP for bu...

Option	Down payment	Installments months	Discount	Offer
Option 1	35 %	-	-	-
Option 2	-	-	-	-
Option 3	-	-	-	-
Option 4	-	-	-	-

Special offer	Rental guarantee
Fully furnished design package	-

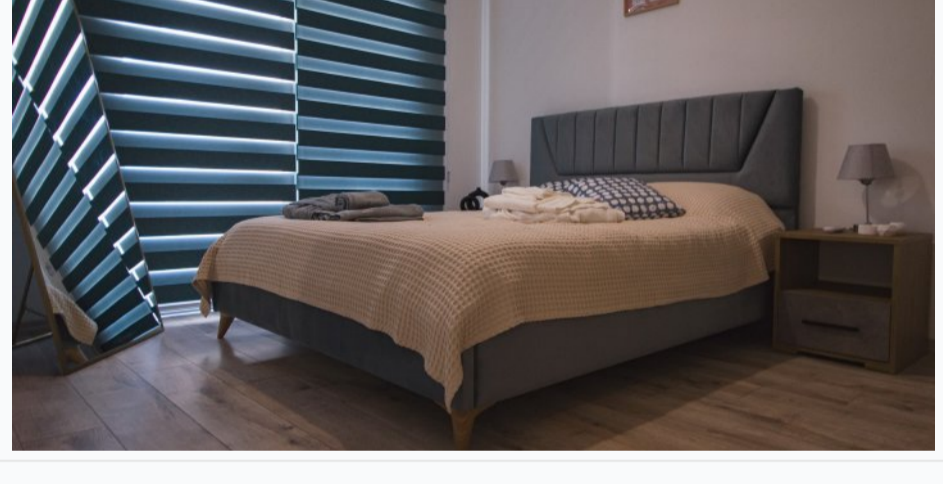
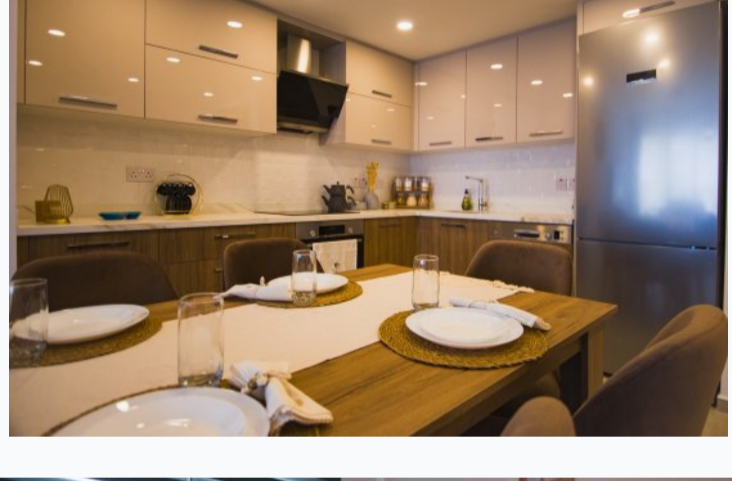
  

Trafo (Blank) GBP    Resale (Blank)    Maintenance fee -    Rental services -

### Details

Bedrooms	Subtype	Block	Unit №	Floor	View	Bathroom	Internal area, sq. m	Balcony/ Terrace, sq. m	Rooftop terrace, sq. m	Garden, sq. m	Gross covered area, sq. m	Current price, GBP	Price per sqm, GBP
2+1	Flat	Olive Hill 4	18	02		1			70		92	264 500	2 875
2+1	Flat	Olive Hill 5	13	02		1			70		92	264 500	2 875
2+1	Flat	Olive Hill 5	18	02		1			70		92	264 500	2 875

### Interior specification



- Air Conditioner
- Ceramic flooring
- Double glazed windows
- Fitted wardrobes in each bedroom
- Laminate flooring in the bedrooms
- Toilet integrated in the walls

### Exterior specification



- Glass fence balcony
- Landscape design
- Private Garden
- Terracing with inbuilt lighting & power sockets

### Location of complex

